



## A1200 ROCKET®

BIGGER IS SOMETIMES BEST! THE LARGEST MACHINE IN THE ROCKET® RANGE OFFERS A FULLY SUSTAINABLE ORGANIC WASTE RECYCLING SOLUTION FOR LARGER CATERING FACILITIES AND MULTI-SITE OPERATIONS.

The A1200 Rocket® composter is capable of continuously processing up to 7000 litres of organic waste each week. Thermostatic controls automate the process ensuring minimum operator interaction with only a standard single-phase 240-volt power supply needed.

Available as a stationary organic waste solution with the facility for temperature recording and robust construction ensuring longevity, the Rocket® range of food waste treatment systems are suitable for the on-site processing of:

- Cooked & Uncooked Meat & Fish
- Cooked & Uncooked Fruit & Vegetables
- Garden Waste
- Animal Waste (including some types of bedding)

*“From the collection of food waste from local estates we are able to produce a great quality of compost”*  
Aardvark Recycling,  
London Borough of  
Camberwell



The A1200 Rocket Pictured with optional bin loading system, located at an Exxon oil exploration site in Africa, processes the food wastes generated from staff catering at the camp. The compost to be used in enriching the soils around the site.



## A1200 ROCKET®

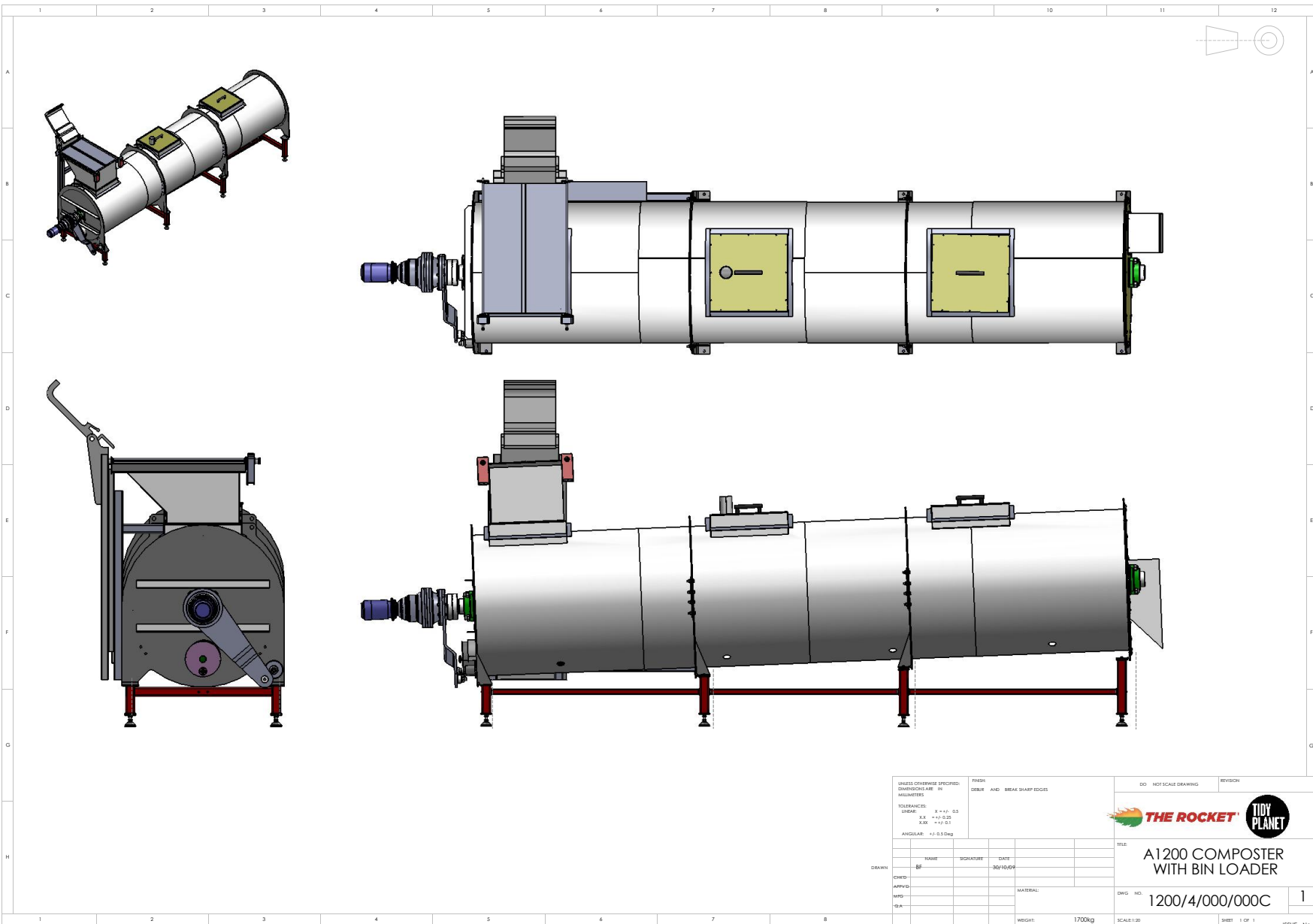
As the largest machine in the Rocket® range the A1200 Rocket® is ideal in array to process material from local food waste collections currently undertaken by:

- Exxon Petroleum
- Aardvark Recycling

## TECHNICAL SPECIFICATIONS

<b>Size</b>	<b>Length</b>	<b>7.0m</b>
	<b>Width</b>	<b>1.4m</b>
	<b>Height</b>	<b>1.8m</b>
<b>Capacity</b>	<b>7000 litres per week mixed organic waste</b> <b>Optional: Up to 10500litres per week (combined with macerator &amp; de-waterer)</b>	
<b>Motor</b>	<b>1.5kWh</b>	
<b>Power Requirement</b>	<b>Single-phase 240-volt, one 13 or 16 amp plug socket</b>	
<b>Average Power Consumption</b>	<b>30kWh per week</b>	
<b>Heater Element</b>	<b>2 x 1kWh – Thermostatically controlled</b>	
<b>Temperature Recording</b>	<b>4 channel datalogger and software as standard – ideal for educational programmes and accurate reporting</b>	
<b>Ventilation</b>	<b>Supplied as standard</b>	
<b>Housing Requirement</b>	<b>Under cover on hard standing (non-porous)</b>	
<b>Options</b>	<b>Macerator and De-waterer package increases capacity to 10500litres per week</b> <b>Power sieve for refining end product increasing product usage</b> <b>Loading steps</b>	

# A1200 ROCKET®



UNLESS OTHERWISE SPECIFIED:  
DIMENSIONS ARE IN  
MILLIMETERS

TOLERANCES:  
FRACTIONS ± 0.5  
DECIMALS ± 0.25  
ANGLES ± 0.5 Deg

FINISH:  
DEBUR AND BREAK SHARP EDGES

DO NOT SCALE DRAWING REVISION

**THE ROCKET** **TIDY PLANET**

TITLE:  
**A1200 COMPOSTER  
WITH BIN LOADER**

DWG. NO.:  
**1200/4/000/000C** 1

SCALE: 1:20 SHEET 1 OF 1 ISSUE No.

T: +302108032373

E: [info@gardenproducts.gr](mailto:info@gardenproducts.gr)